



MONTHLY MEMBERSHIP PROGRESS REPORT

District 2 T1

Results as of: 01/31/2018

GMT: JOE AL PICONE

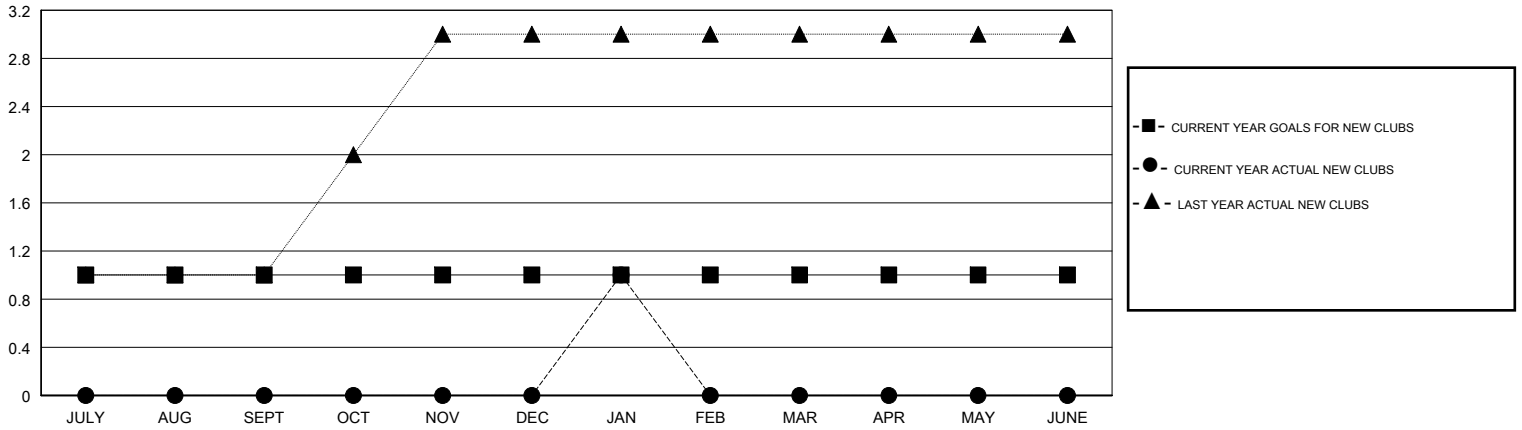
LOCATION TEXAS

GMT CA

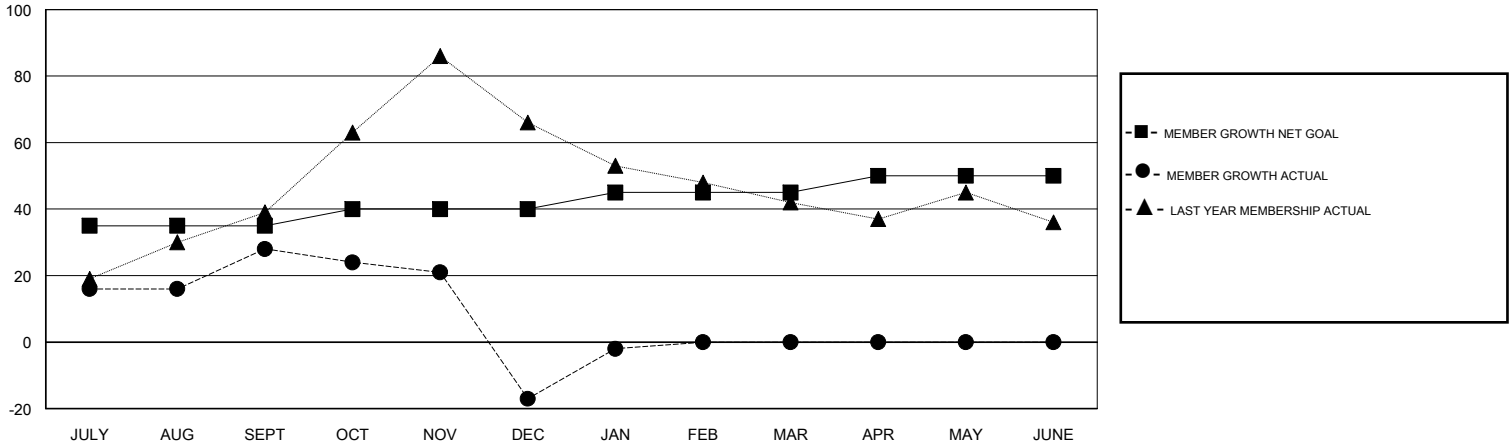
Clubs			
RESULTS FOR 2017-2018			
QUARTER	NEW CLUB GOAL	NEW CLUBS	DROPPED CLUBS
JULY/AUG/SEPT	1	0	0
OCT/NOV/DEC	0	0	1
JAN/FEB/MAR	0	1	0
APR/MAY/JUNE	0	0	0

Members			
RESULTS FOR 2017-2018			
QUARTER	MEMBER GROWTH NET GOAL	MEMBER GROWTH ACTUAL	DROPPED MEMBERS ACTUAL (including transfers)
JULY/AUG/SEPT	35	76	44
OCT/NOV/DEC	5	19	64
JAN/FEB/MAR	5	28	13
APR/MAY/JUNE	5	0	0

GOALS AND ACTUAL NEW CLUBS CUMULATIVE



GOALS AND ACTUAL MEMBERS CUMULATIVE



DROPPED CLUBS: 1	17 CLUBS OF 40 ADDED 1 OR MORE NEW MEMBERS	<u>GENDER DISTRIBUTION</u>	
DROPPED MEMBERS		MALE	898 (70.43%)
DECEASED	12	FEMALE	377 (29.57%)
CLUB CANCELLED	21	Women Percentage Fiscal Year Goal: 5%	
OTHER	88	TOTAL FAMILY UNIT MEMBERS	156
TOTAL	121	FAMILY MEMBERS PAYING HALF DUES	78

[CLICK HERE FOR CUMULATIVE MEMBERSHIP DATA](#)